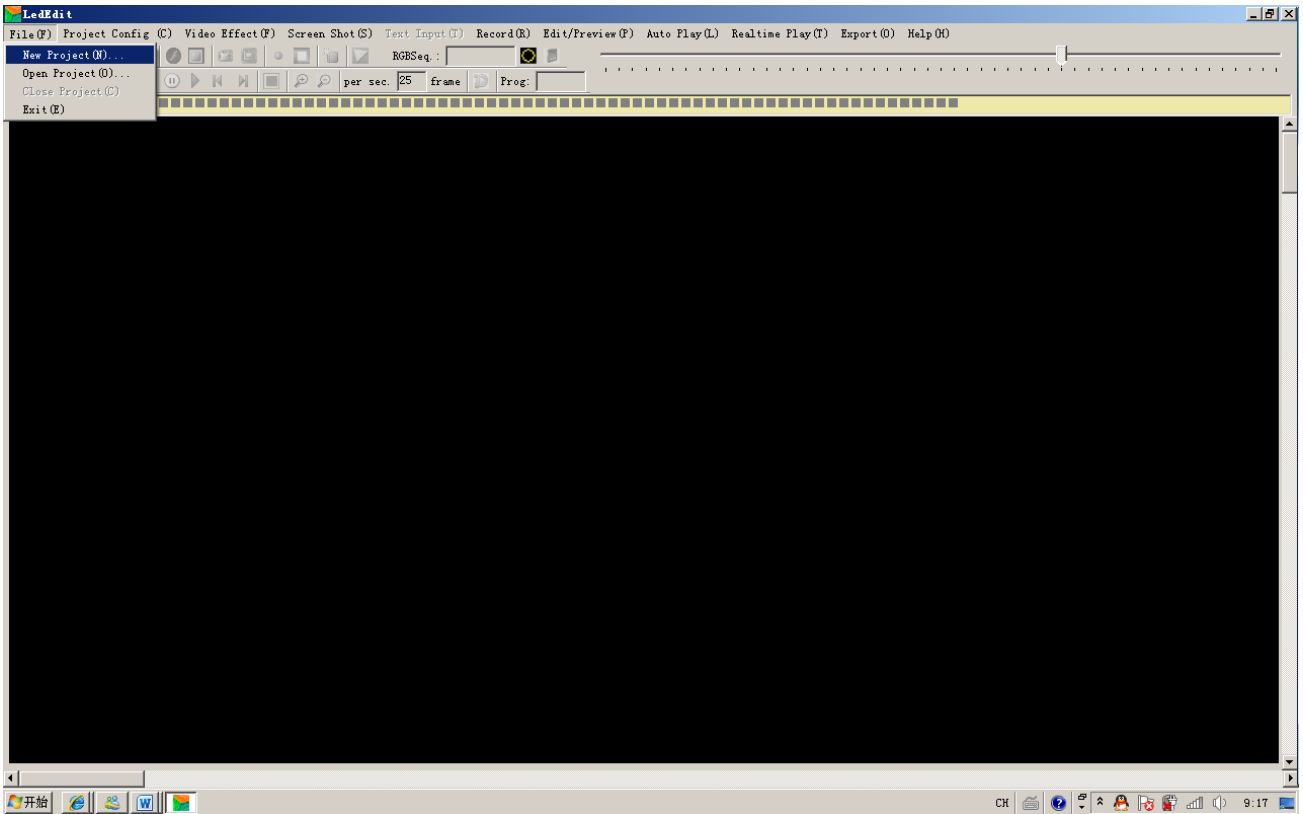


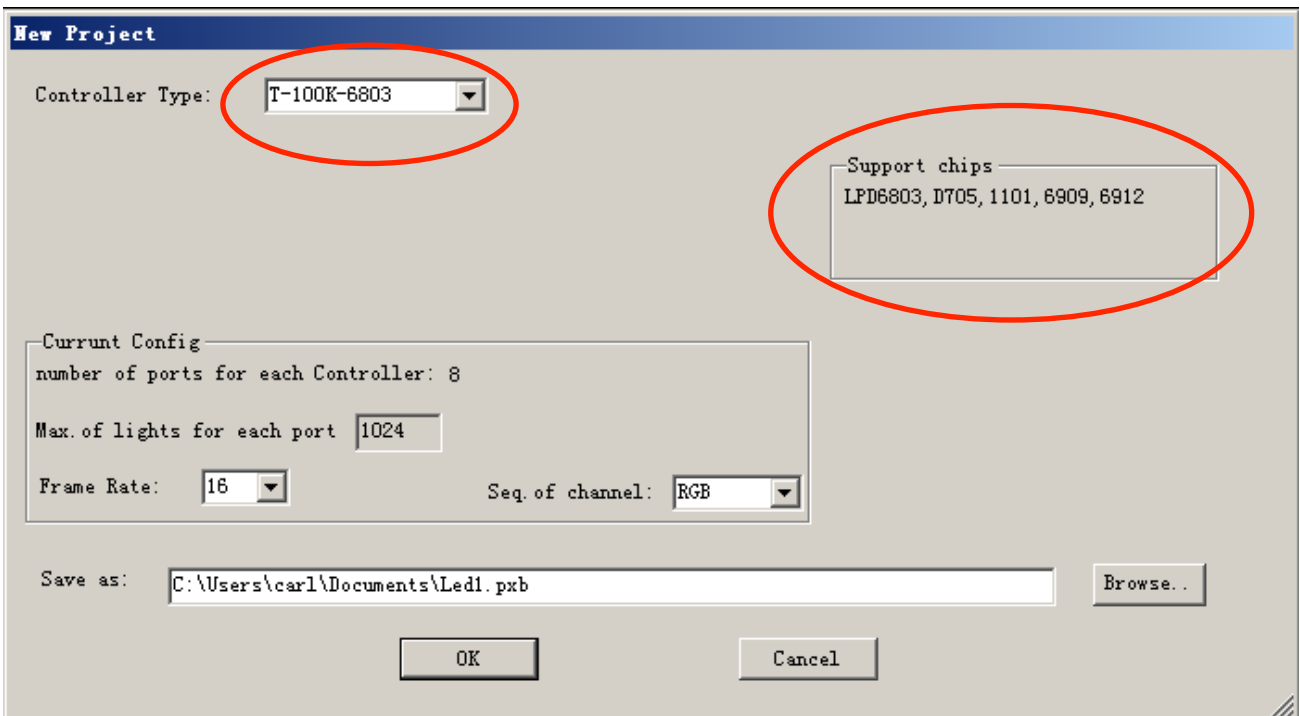
LedEdit2013 operating manual

1. Create a new project.



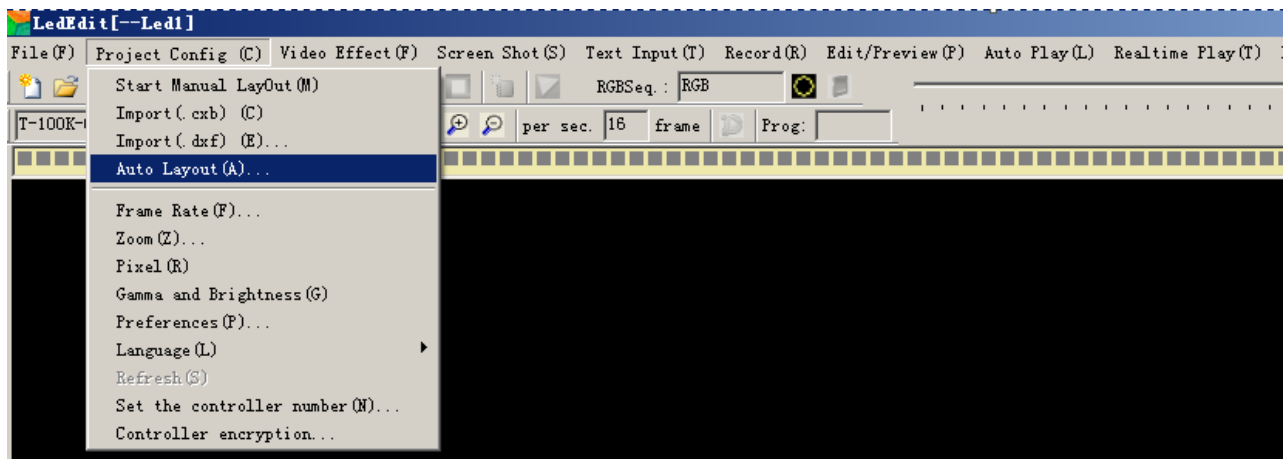
2. Choose the controller model and chip type.

Note: T-100K-* is for the old T-100k controller, the new T-100K controller please choose T-100K-B, and the model T-100K is the as T-200K. So when you use the model T-200K, just choose T-100K-B. The support chips on your right side will notice you which chips is the same as the controller type you have chosen.



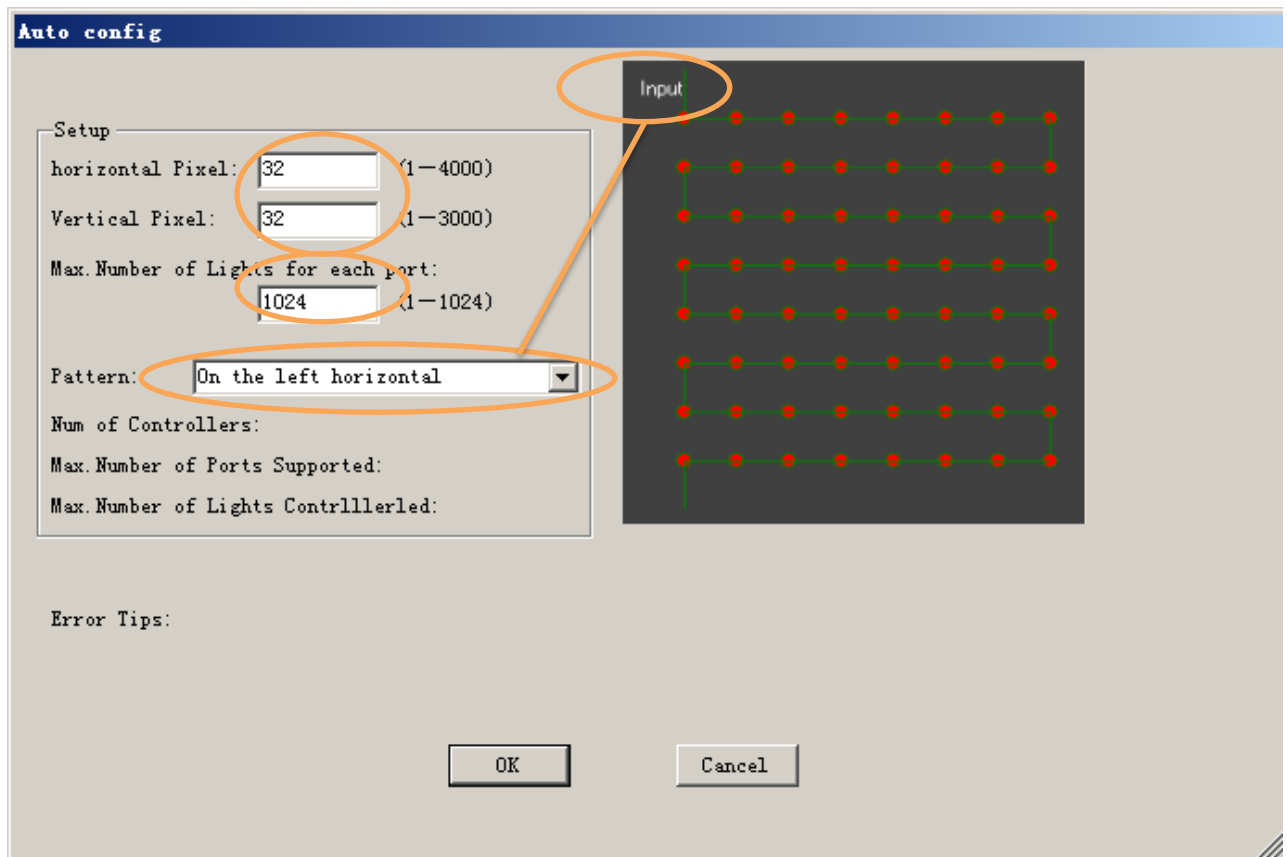
3. Project config and Layout the LED pixels.

A. Auto layout

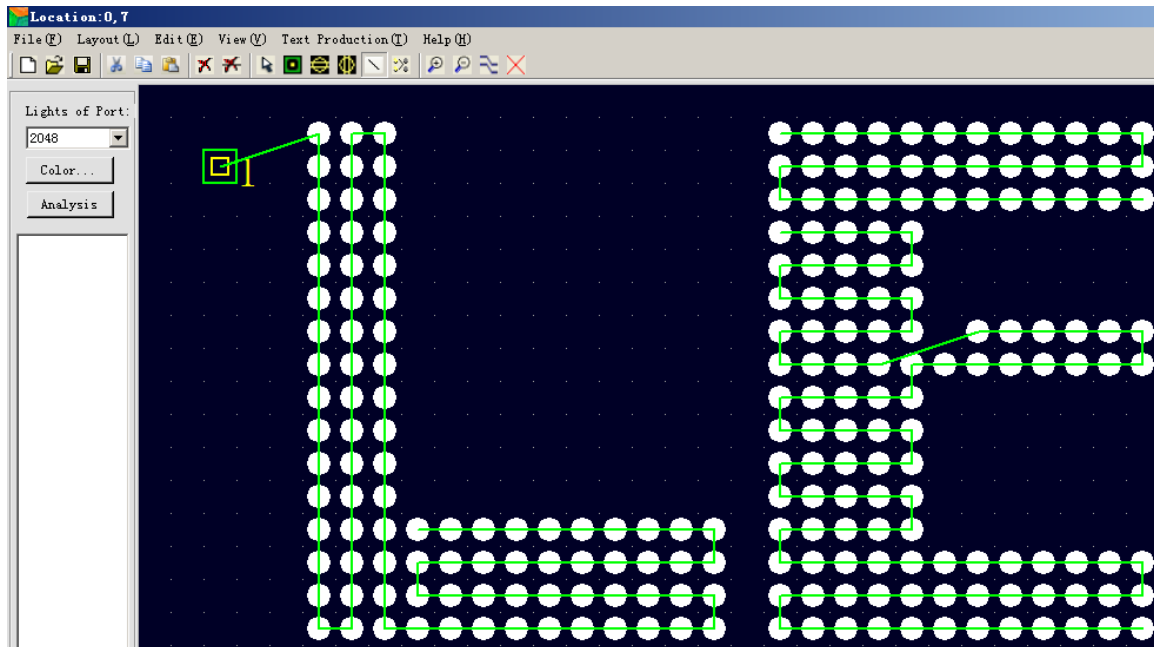


If the pixels layout is the rules shapes, you can choose auto layout. It is very convenient for you to layout the pixels.

You can change the horizontal pixels quantity and vertical pixels quantity. You also can change the direction pattern, and the max quantity for each port output.



B. Manual layout.

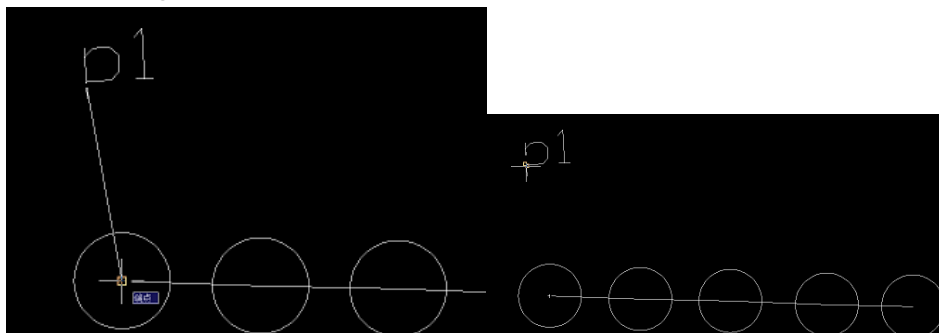


It is very convenient for you to layout some simple special shapes if you choose the manual layout. When you use the tool you will like it soon. First, click the circle and drag it from one point to another. You can layout all the shapes you want in the software. After you finished the layout, remember to add the port, and use the line to link port and the circle together, then save it. And import it to the software ledEdit.

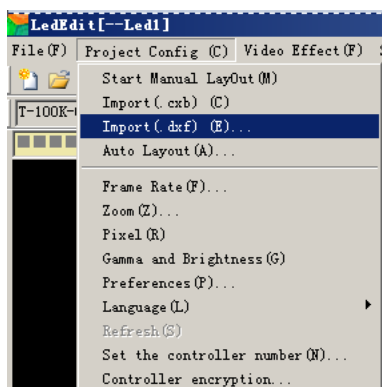
C. AutoCAD layout



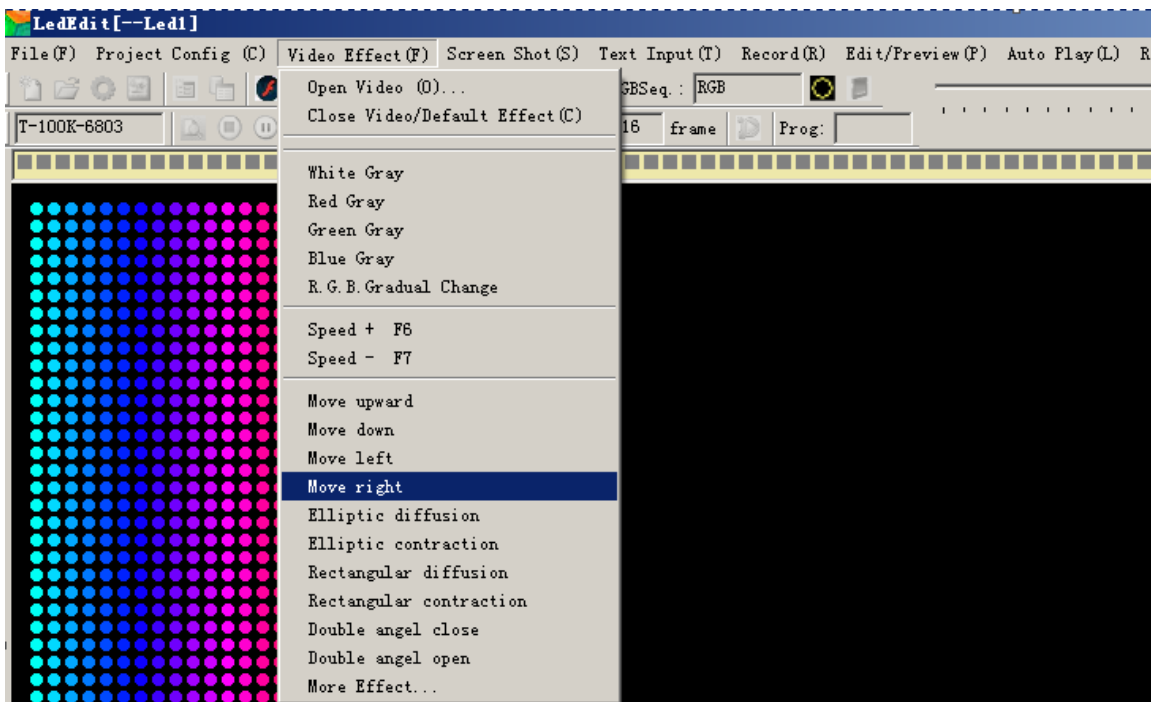
Just use the circle and line to layout, you must use the line to link the center of circle one to another. Use the single-line text input as the port mark, then use the line to link the insertion of the single-line text and the center of the circle together.



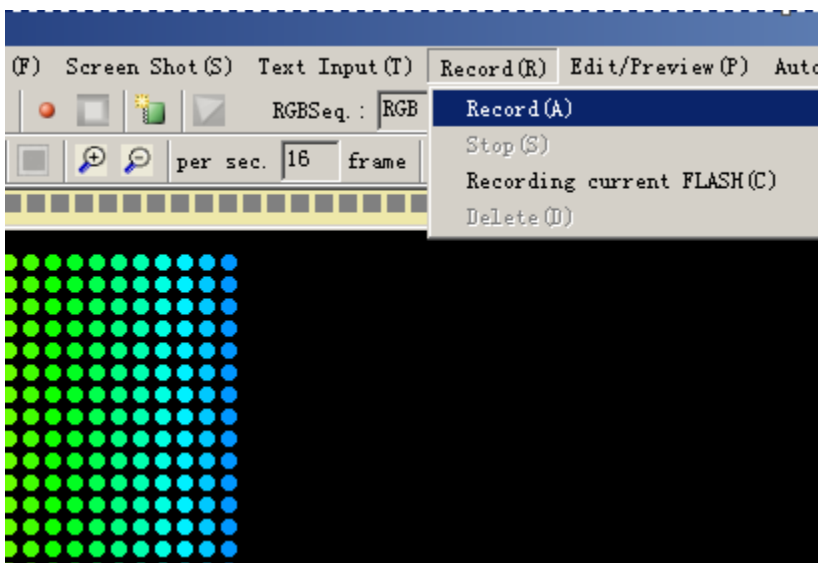
Save as the .dxf format. And then import it to the software (LedEdit).



4. Record the effect.

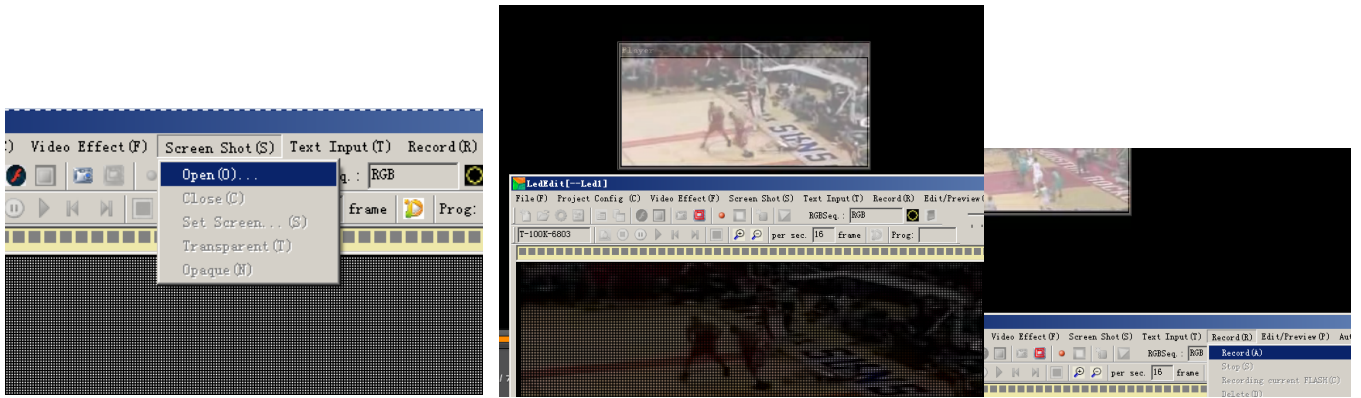


The software LedEdit has several effects in the menu, but sometimes you must use the flash software to edit the animation to meet the customer's requirement. You can click the menu 'open video' or 'more effect' to play the flash animation on the software, then record it.

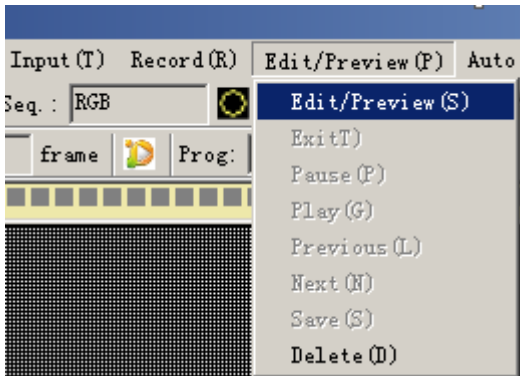



After you play the animation files in the software, you must click the menu 'record' to record the animation which you want to. You also can click the menu "Recording current FLASH" to record the whole flash files which you play on the software.

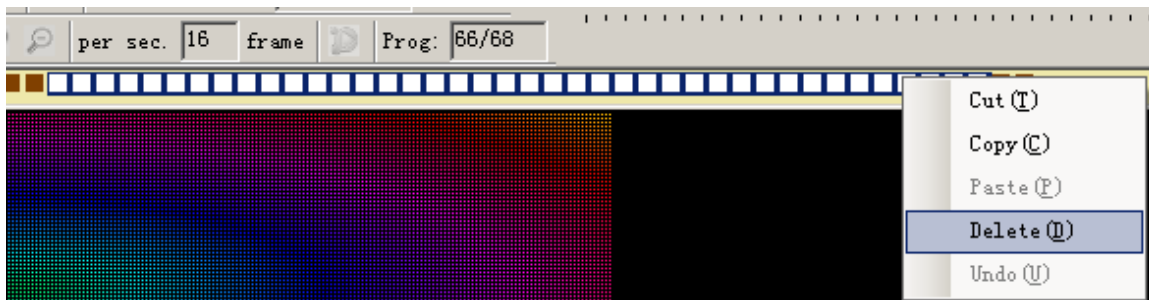
And sometimes can use the menu "Screen shot" to record the animation which you cannot edit in the flash software but can play on the computer, then record it.



When you finish recording the animation, you can click the menu “Edit/preview” to preview the animation which you have recorded.



If there is some frames you don't like it. You can click the stop button , and select the frames which you don't like then right-click and delete. After finish it, please save it.



5. Export the program.

After you finished all the step, next step is to export the program. Then copy the file to the SD card. So please click the Export Effect menu to export the program files(.led).



Note: Before you copy the program to the SD card, please format the SD card as the FAT format.

- Remember step1. Create a new project,
- Step 2. Led pixels layout.
- Step 3. Record the animation effect.
- Step 4. Export the effect .led file.
- Step 5. Format the SD card.

Step 6. Copy the program to the SD card.